

X-Ways Forensics

Creating Images in X-Ways Forensics

X-Ways Software Technology AG
Carl-Diem-Str. 32
32257 Bünde
Germany

Web: <http://www.x-ways.net>

X-Ways Software Technology AG
Agrippastr. 37-39
50676 Köln
Germany

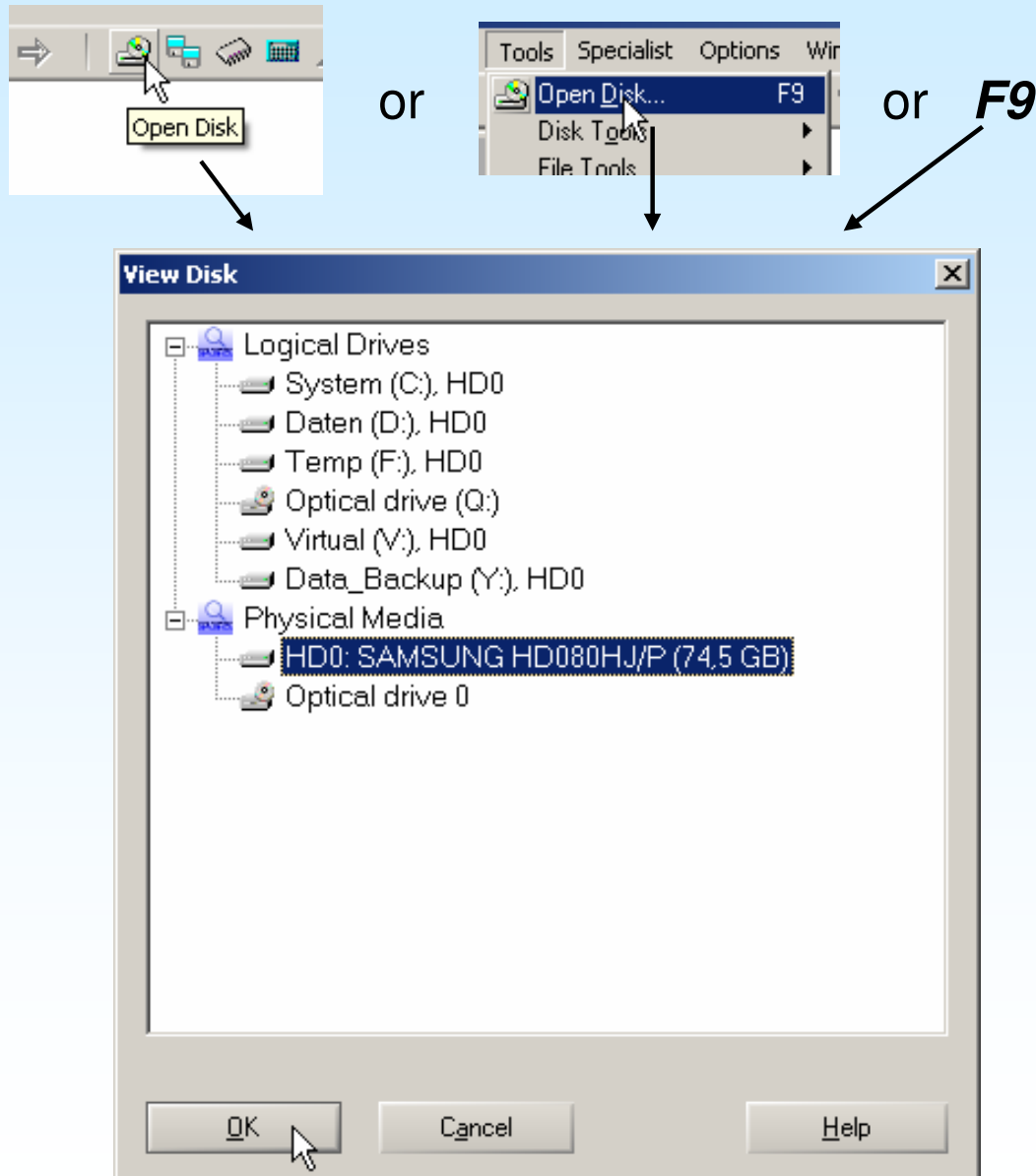
E-mail: mail@x-ways.com

Phone: +49-221-420 486 5

Based on v14.9. Please subscribe to the newsletter to stay informed of updates to the software.

All rights including but not limited to reproduction reserved.

Step 1: Open medium to image



Either click the “Open Disk” button in the tool bar or the menu command from the Tools menu or simply hit the F9 key to call the View Disk dialog.

You can select either full physical media or choose a logical drive letter.

Step 1a: Optionally open a partition on the disk

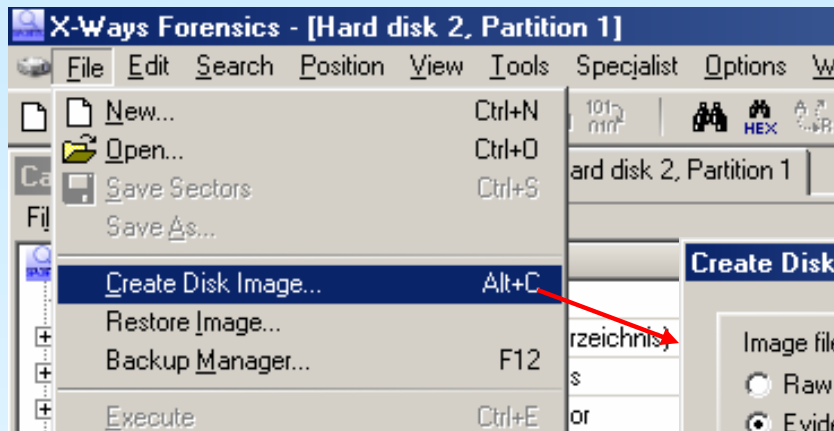
Hard disk 0								
Partitioning type: MBR								
Name	Type	Size	Created	Modified	Accessed	Attr.	1st sector	
Partition 1		47,0 MB					63	
Partition 2		17,6 GB					96390	
Partition 3		19,5 GB					36965628	
Partition 4		7,8 GB					77931378	
Partition 5		1,5 GB					94317678	
Partition 6		9,1 GB					97402158	
Partition 7		19,0 GB					1164552...	

Hard disk 0 Hard disk 0, Partition 3								
7 days ago								
Name	Type	Size	Created	Modified	Accessed	Attr.		
Pfad unbekannt								
(Stammverzeichnis)		8,2 KB	03.01.2006 10:03:38	30.05.2007 10:28:21	30.05.2007 10:28:21	SH		
RECYCLER		328 bytes	03.01.2006 11:25:56	03.01.2006 11:25:56	30.05.2007 10:28:05	SH		
temp		4,0 KB	26.09.2006 10:17:43	19.12.2006 11:13:13	30.05.2007 10:28:05			

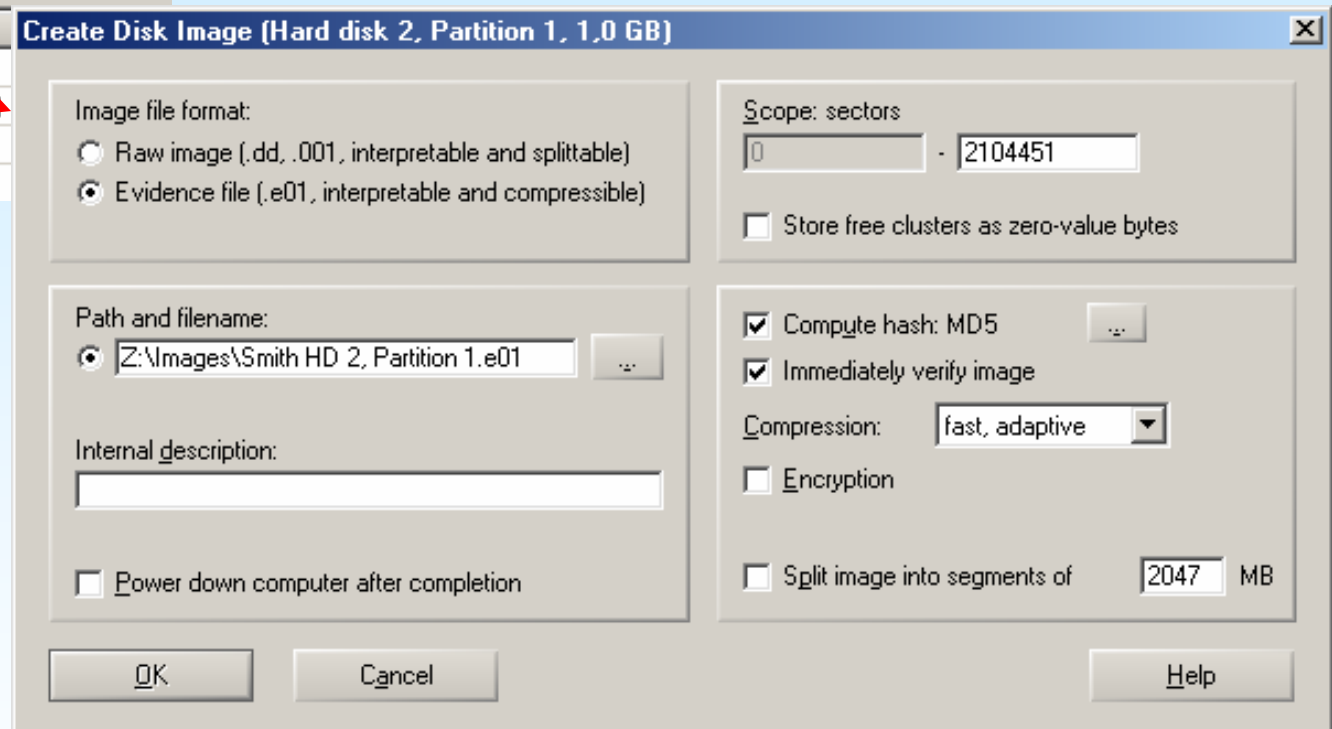
Select a particular partition and open it. For images of the complete medium, this is not necessary, of course.

Step 2: Create the Image

The command always applies to currently active tab within X-Ways Forensics.



Hash computation allows for later verification of image integrity.



Splitting images helps if you need to store them on CD-Rs or DVD+/-Rs or FAT32 file systems.